

Elastogum FWS - H

FWS Foundation Waterproofing System

| | | | | | | | | | |
|-------------------------------|---|--|--|----------------|-----|----------------|-----|-----------|------|
| Description | Membrane for foundation waterproofing works provided with high strength reinforcement for heavy duty applications. The membrane is composed of a special SBS elastomeric bitumen compound and a top finish surface reactive in contact with fresh concrete. Elastogum FWS - H is used to waterproof horizontal foundation slabs in order to have total adhesion to the structural concrete. | | | | | | | | |
| CE | Foundations according with EN13969. Horizontal slabs | | | | | | | | |
| Field of use | 2-layer Foundation Waterproofing System (FWS) . Elastogum FWS-H is fully torched on Elastogum FWS Protection (Base layer) and then it directly receives poured concrete to which it totally adheres thanks to its special reaction. | | | | | | | | |
| Certifications and Agreements | CE marking - FPC certificate number 1370-CPR-0042. ASTM 7832 – ASTM D5382 – ASTM D903 | | | | | | | | |
| Composition | Top Surface: Reactive micro-silica Back Surface: Film Reinforcement: Polyester reinforced with fiber glass | | | | | | | | |
| Method of application | Fully torch applied on Elastogum FWS Protection. 10cm side lap, 15cm end-lap overlappings. | | | | | | | | |
| Dimension and packaging | Elastogum FWS-H <table><tr><td>Thickness (mm)</td><td>3,5</td></tr><tr><td>Weight (kg/m2)</td><td>4,3</td></tr><tr><td>Rolls (m)</td><td>1x10</td></tr></table> | | | Thickness (mm) | 3,5 | Weight (kg/m2) | 4,3 | Rolls (m) | 1x10 |
| Thickness (mm) | 3,5 | | | | | | | | |
| Weight (kg/m2) | 4,3 | | | | | | | | |
| Rolls (m) | 1x10 | | | | | | | | |

| Property | Test Method | Unit | Value | Tolerance |
|---|-------------------|-------------------|----------|-----------|
| Lenght | EN 1848-1 | m | 10 | -1% |
| Width | EN 1848-1 | m | 1,0 | -1% |
| Thickness | EN 1849-1 | mm | 3,5 | ±0,2 |
| Weight | EN 1849-1 | Kg/m2 | 4,3 | ±10% |
| Tensile strength at max | EN 12 311-1 | L x T (N/50mm) | 1000/800 | ±20% |
| Elongation at max | EN 12 311-1 | L x T (%) | 50/50 | ±15 |
| Nail tearing resistance | EN 12 310-1 | L x T (N) | 200/200 | ±30% |
| Joint shear resistance | EN 12317-1 | N / 50mm | 700 | ±20% |
| Static load – Method B | EN 12 730 | Kg | 20 | ≥ |
| Resistance to impact | EN 12691 | mm | 1000 | ≥ |
| Flexibility at low temperature | EN 1109 | (°C) | -20 | ≤ |
| Flow resistance at elevated temperature | EN 1110 | (°C) | 100 | ≥ |
| Dimensional stability | EN 1107-1 | % | ±0,3 | ≤ |
| Watertightness | EN 1928-B | kPa | 690 | ≥ |
| Reaction to fire | EN 13501-1 | - | F | - |
| Cold flexibility after thermal ageing | EN1296 EN 1110 | (°C) | -20 | +15 |

Storage

This product is packaged in rolls set up vertically on pallet or wooden box. It must be stored vertically under shelter, away from heat sources.

Modifications

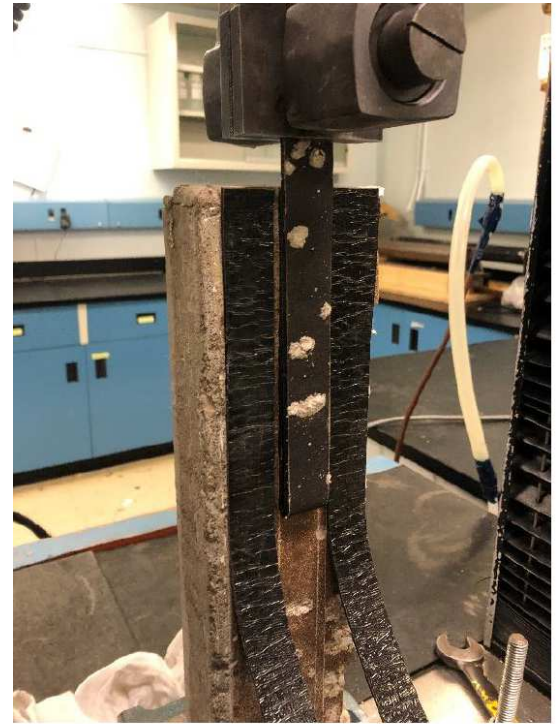
Our company reserves the right to modify its composition as a result of technologic and experiments improvements. This product data sheet supersedes the previous edition, to obtain the updated technical data sheet, please contact our technical department.

Characteristics according with ASTM 7832 – ASTM D5382 – ASTM D903

| Characteristics | Test Method | Unit | Value |
|---|------------------|-----------|-----------------------------|
| Resistance to hydrostatic head | ASTM D5385 | psi ft | 100 ⁽¹⁾ (231) |
| Lateral water migration | ASTM D5385 modif | psi ft | 100 ⁽¹⁾ (231) |
| Adhesion to poured structural concrete - Peeling | ASTM D903 | pli | >3 ⁽¹⁾ |
| (1) Values according with ASTM 7832 Standard Guide for Performance Attributes of Waterproofing Membranes Applied to Below-Grade Walls / Vertical Surfaces (Enclosing Interior Spaces) | | | |



Sample sustained 100 psi later water head pressure.



Peel testing is in progress