

Elastogum FWS - SL HP

FWS Foundation Waterproofing System

Description	Single layer membrane for foundation waterproofing works provided with high strength reinforcement for heavy duty applications. The membrane is composed of a special SBS elastomeric bitumen compound and a top finish surface reactive in contact with freshstogum FWS - H is used to waterproof horizontal foundation slabs in order to have total adhesion to the structural concrete.								
CE	Foundations according with EN13969. Horizontal slabs								
Field of use	Single layer Foundation Waterproofing System (FWS) . Elastogum FWS SL HP directly receives poured concrete to which totally adheres thanks to its special reaction. Elastogum FWS SL HP is also gas and radon resistant.								
Certifications and Agreements	CE marking - FPC certificate number 1370-CPR-0042. ASTM 7832 – ASTM D5382 – ASTM D903								
Composition	Top Surface: Reactive micro-silica Back Surface: Film Reinforcement: Polyester reinforced with fiber glass								
Method of application	Loose laid over concrete screed (protected with geotextile if necessary). Joints welded. 10cm side lap, 15cm end-lap overlappings.								
Dimension and packaging	Elastogum FWS-SL HP <table><tr><td>Thickness (mm)</td><td>4,5</td></tr><tr><td>Weight (kg/m2)</td><td>-</td></tr><tr><td>Rolls (m)</td><td>1x8</td></tr></table>			Thickness (mm)	4,5	Weight (kg/m2)	-	Rolls (m)	1x8
Thickness (mm)	4,5								
Weight (kg/m2)	-								
Rolls (m)	1x8								

Property	Test Method	Unit	Value	Tolerance
Lenght	EN 1848-1	m	8	-1%
Width	EN 1848-1	m	1,0	-1%
Thickness	EN 1849-1	mm	4,5	±0,2
Weight	EN 1849-1	Kg/m2	NPD	±10%
Tensile strength at max	EN 12 311-1	L x T (N/50mm)	1200/1100	±20%
Elongation at max	EN 12 311-1	L x T (%)	50/50	±15
Nail tearing resistance	EN 12 310-1	L x T (N)	200/200	±30%
Joint shear resistance	EN 12317-1	N / 50mm	700	±20%
Static load – Method B	EN 12 730	Kg	25	≥
Resistance to impact	EN 12691	mm	1750	≥
Flexibility at low temperature	EN 1109	(°C)	-20	≤
Flow resistance at elevated temperature	EN 1110	(°C)	100	≥
Dimensional stability	EN 1107-1	%	±0,3	≤
Watertightness	EN 1928-B	kPa	690	≥
Reaction to fire	EN 13501-1	-	F	-
Cold flexibility after thermal aeing	EN1296 EN 1110	(°C)	-20	+15
Radon permeability	CSI test method	cm3/m2 x 24 h x atm	46	≤

Storage

This product is packaged in rolls set up vertically on pallet or wooden box. It must be stored vertically under shelter, away from heat sources.

Modifications

Our company reserves the right to modify its composition as a result of technologic and experiments improvements. This product data sheet supersedes the previous edition, to obtain the updated technical data sheet, please contact our technical department.

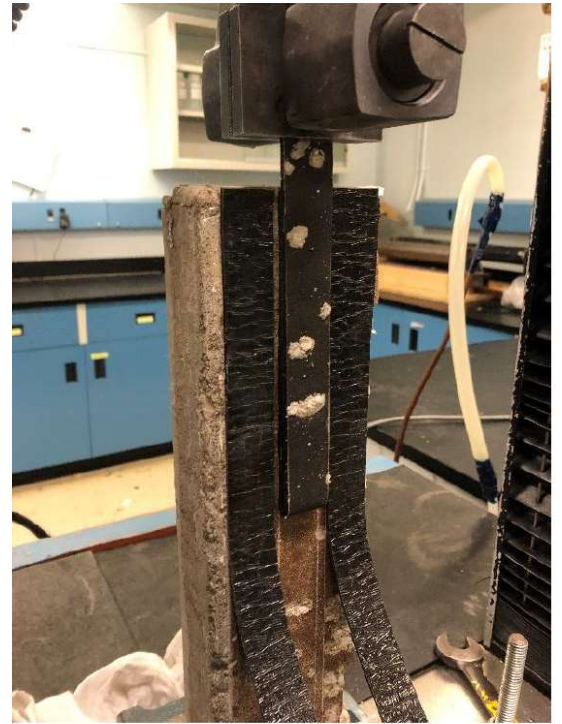
Characteristics according with ASTM 7832 – ASTM D5382 – ASTM D903

Characteristics	Test Method	Unit	Value
Resistance to hydrostatic head	ASTM D5385	psi ft	100 ⁽¹⁾ (231)
Lateral water migration	ASTM D5385 modif	psi ft	100 ⁽¹⁾ (231)
Adhesion to poured structural concrete - Peeling	ASTM D903	pli	>3 ⁽¹⁾

(1) Values according with ASTM 7832 Standard Guide for Performance Attributes of Waterproofing Membranes Applied to Below-Grade Walls / Vertical Surfaces (Enclosing Interior Spaces)



Sample sustained 100 psi later water head pressure.



Peel testing is in progress